



5 YORK WAY LONDON, N1C 4AN

£2,800 PER MONTH

Welcome to Saxon Court, a modern residential development situated in the vibrant heart of King's Cross, London. The two-bedroom apartment that boasts a bright and airy living area, enhanced by large windows that flood the space with natural light. The open-plan kitchen is thoughtfully designed with sleek finishes, making it a perfect space for both cooking and entertaining. The two spacious bedrooms provide a serene retreat from the bustling city, while the modern bathroom, finished to a high standard, features a relaxing bathtub.

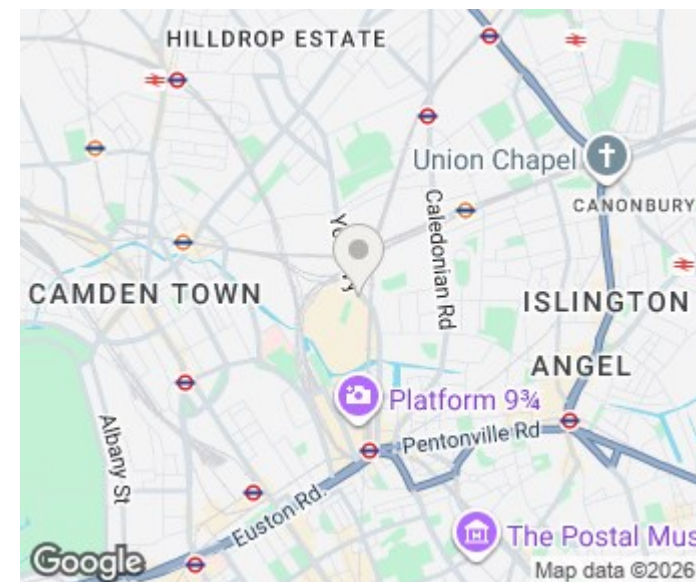
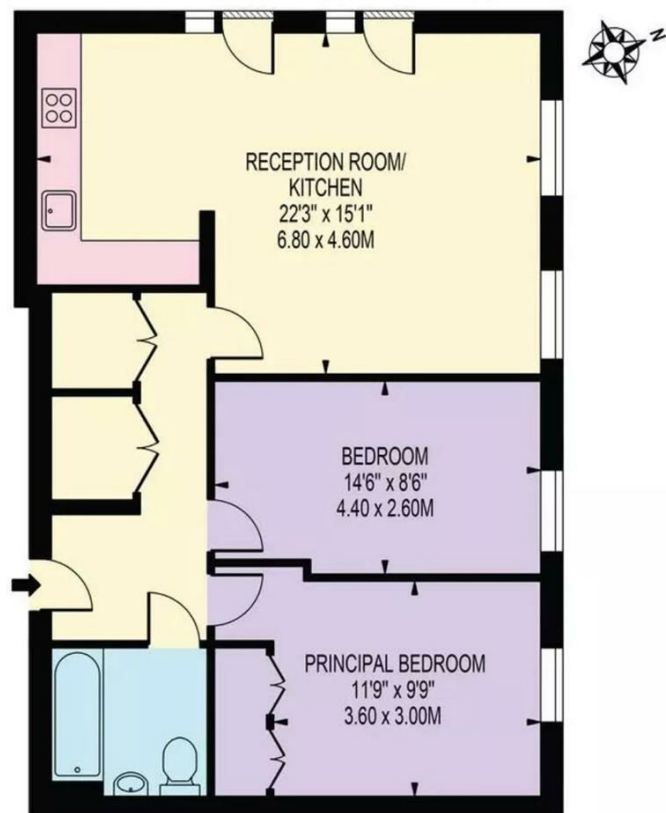
Residents of Saxon Court enjoy the benefits of secure entry and a concierge service, ensuring peace of mind and convenience. The communal areas are well-maintained, adding to the overall appeal of the property.

The location is truly exceptional, just moments away from King's Cross St Pancras Station, which offers outstanding transport links across London and beyond. A diverse array of restaurants, cafés, shops, and cultural attractions, including the picturesque Regent's Canal and the renowned British Library, are all within easy reach.

apple  estates™

SAXON COURT

APPROXIMATE GROSS INTERNAL FLOOR AREA: 738 SQ FT - 68.52 SQ M



Energy Efficiency Rating		
	Current	Potential
Very energy efficient - lower running costs		
(92 plus) A		
(81-91) B		
(69-80) C	79	79
(55-68) D		
(39-54) E		
(21-38) F		
(1-20) G		
Not energy efficient - higher running costs		
England & Wales	EU Directive 2002/91/EC	

Agents Note: Whilst every care has been taken to prepare these particulars, they are for guidance purposes only. All measurements are approximate and are for general guidance purposes only and whilst every care has been taken to ensure their accuracy, they should not be relied upon and potential buyers/tenants are advised to recheck the measurements

Apple Estates
9 Kings Parade
Askew Road
Shepherds Bush
W12 9BA

02087409000
info@appleestates.co.uk
<https://www.appleestates.co.uk/>

apple  estates™